

Term 3, Week 9 2020

Dates to Remember...

BOT Meetings in the school staffroom at 6.30pm

Wednesday October 21
Wednesday November 25
Wednesday December 9

Celebration Assemblies

Fridays from 8:45am
October 9 Team Kāhu
October 23 Team Toroa
November 6 Team Kōtuku
November 27 Book Character Day
December 11 Final Assembly
Monday December 7 Final Sports Assembly

Term Dates

2020
Term 4: Oct 12 - Dec 15

2021

Term 1: February 2-April 16
Term 2: May 3-July 9
Term 3: July 26-October 1
Term 4: October 18-December 14

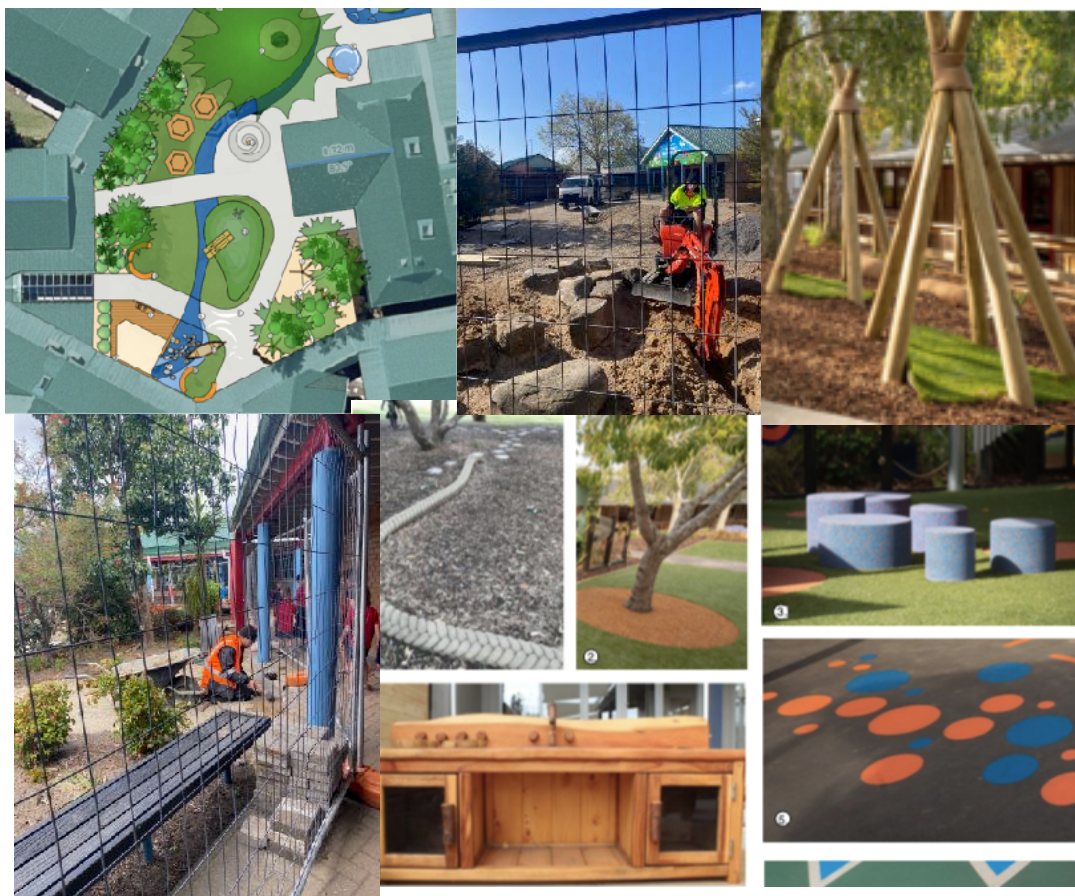
LABOUR DAY (school closed)
Monday October 26

Teacher Only Days
Friday October 23

SRP Extravaganza
Wednesday November 19

Kia ora tātou whānau

The view from our office is pretty exciting right now as we watch our dreams and schemes for the heart of school come to life. The contractors are right on schedule for an amazing transformation and the new play and learning space should be fully revealed on the planned finish date of October 21. We can't wait! During the term break the old library building in the central courtyard will also be renovated to make two learning spaces and the painters will be in to begin scheduled maintenance for Team Kāhu, re-painting the exteriors of rooms 13-17. It's all go!



Learners Soaring High
Kia Hokahoka Kahurangi



Welcome Amy

A warm welcome to Amy Harrison who will be joining our fabulous team of teaching assistants next term. Amy has just completed her undergraduate degree in psychology and is planning further study in educational psychology. We're lucky to be able to nab her for the university holidays! Passionate about working with tamariki, Amy is also a dab hand on the football field, playing women's premier league from a very young age and also working as a technical skills and specialised goalie coach. Welcome to the team Amy!



For events, click on the [calendar](#) on our website.

Check out the SRP Website, Facebook Page and Radio Station!

www.selwynridge.school.nz

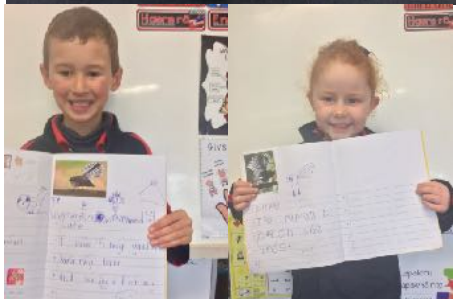


Kids on the Ridge
106.7fm

Our Learning

Encounters with Piwakawaka

It's all about fantails in room 7 currently! Their weekly visits to Johnson Reserve have inspired an inquiry into their habits and habitat and reinforced what curious scientists our youngest learners are. They've made a model of the reserve they love so much and learned a great deal about their favourite manu; showcasing their learning across the curriculum through their writing, art, science and construction projects. They're looking forward to sharing their learning with whānau, who they have invited in next week. They and their learning buddies in room 4 have so much to show off to their family and friends!



Learning in Nature

"Since by definition, learning is change, when you learn nature's lessons you are changed" Ron Lizzi (author of Go Outside and Come Back Better: Benefits from Nature that Everyone Should Know)

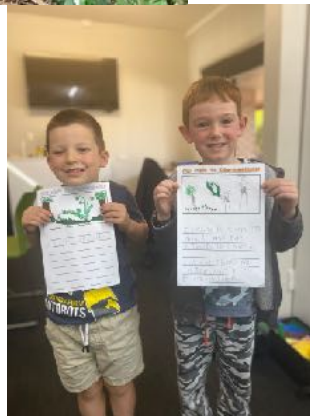
At Selwyn Ridge we are committed to providing as many rich learning opportunities outside the classroom as we possibly can. Countless studies have proved the benefits of learning in nature and in the "real" world. We are so fortunate to have Johnson Reserve as a fabulous extra learning environment right in our backyard and we visit there almost daily. Most weeks, one of our classes also ventures further and we are very grateful for your help in transporting and supporting our tamariki to enable all these valuable learning experiences. As well as the huge value of the shared experiences in themselves, they provide great motivation for more academic learning back in the classroom. It's so exciting to see our tamariki bouncing into the office beaming with pride and eager to share their writing about their adventures!

Rooms 19 and 21 Hikoi up Mount Otanewainuku



Room 21's shared writing

Humungous tree
Smooth leaves
Giant trees
Hanging vines
Roots like stairs
Kiwi burrows
Ginormous rimu tree
Trees whooshing
Birds singing
Spiky leaves
Soft leaves
Dead logs
White and brown mushrooms
Tuis singing
Waterfall splashing
Stinky longdrop toilet!



School Information

Address: 20 Holmburn Street, Welcome Bay

Email: srp@selwynridge.school.nz

Kids on the Ridge Radio: 106.7fm

Bank Account: ANZ 01-0475-0114642-00

Website: www.selwynridge.school.nz

Facebook Pages:

SRP Main: [Selwyn Ridge Primary School](#)

SRP Sports: [Selwyn Ridge Primary Sports Facebook](#)

SRP Whanau/Community: [SRP Whanau Page](#)

SRP STAR (PTA) Email: star@selwynridge.school.nz

Bits and Pieces

Road Safety

As the traffic and roads continue to grow busier, but the weather grows finer, this is a timely reminder that we have a designated drop-off area at the tennis courts on Victory Street. We have a group of 'walking feet' students who are there and at other school entrances each morning from 8:00am to 'click' the tickets of those tamariki using this facility (this includes those students cycling to school). We encourage you to use drop-off areas where possible to reduce congestion at the top of Holmburn Street.

School Hats

A reminder that in term 4, school hats are a compulsory part of our uniform. Please ensure that your child has their sun hat at school every day so that they can learn and play safely outdoors.

Naming uniform

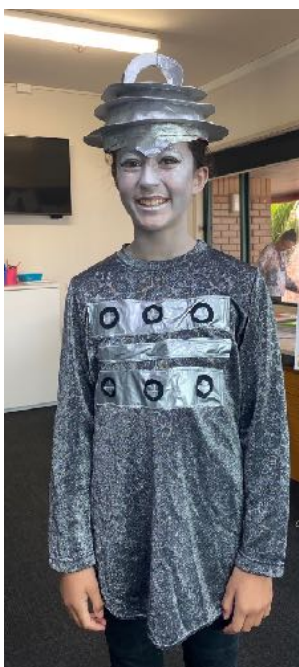
Please name uniforms. We love to return any items of lost property and having it named certainly helps. Should your child mislay anything, first check the lost property boxes in the hall.

Scholastic Book Fair

This year's book fair arrives on Tuesday November 24 and leaves on Tuesday December 1. It's a great way to stock up your bookshelves and benefit the school at the same time. It's also the week we hold the great Selwyn Ridge Book Character Dress Up Day, one of the highlights of our school year. Mark it on your calendars now!

Still Made in New Zealand

COVID may have put the kybosh on our school production as we have known it in the past but it sure hasn't curbed the creativity of our senior students. They've enthusiastically transformed the planned production to a movie script and gotten stuck into preparation for making a film instead. It's going to be great and we will keep you posted on plans for the premier in term 4. Filming has begun today and will continue into next week with post production and event planning happening early next term. Below some glimpses behind the scenes.....



Book Club

Orders earn rewards for our school and are delivered free of charge to school and distributed by your teacher.

Order and pay online by visiting, <http://www.scholastic.co.nz/parents/lucky-book-club/> then:

- Click on 'Order Here' and log into loop or set up your loop.
- Open a new tag and open the brochure.
- Click between the two to view books, get codes and order.

Any questions, ask at the school office.

Blackout Poetry

In between the film-making, Room 14 have also found time to write some cool poetry. "We are focusing on our word choices in writing and how that makes an impact on our audience. We are trying to write like a reader, and create images in our reader's head with our words. We are using words that make us feel something, appeal to our senses, and are creative and expressive. We have had to be researchers and creative thinkers to find interesting and new ways to express ourselves."



Sports

Summer Sports

Summer Sports Registrations were due last week but we still have a few spaces in Floorball, Flippaball, Cricket, Year 3/4 Tennis and Focus on Fun if you missed out. Get those forms in to Julie Taylor asap.

Keeping Active out There

Our year 1's took over the courts and the bike track this morning for some fun on wheels before the rain hit. We've also had the team from the Women's Self Defence Network—Wahine Toa back in for more self defence sessions with our year 4 girls. The Cricket Awareness programme from the Western Bay Cricket Association has also started up for our year 1-4 learners.



SELWYN RIDGE PRIMARY



SUPPORT • TEAM • ADDING • RICHNESS

DUATHLON PROUDLY SPONSORED BY: BAY ORTHODONTICS, D&B CONSTRUCTION, TANNER ELECTRICAL, SPORT BOP, TGA CITY FEET FIRST, COREDESIGN and ROCKET BIKES

Bay Orthodontics

Feet First

COREDESIGN

Tanner Electrical Services Ltd

Sport Bop

D&B Construction

ROCKET BIKES

Notices and News

'We're working together to grow great kids'
E mahi tātou ki te whakatupu ake i a tātou tamariki



Visit kidslink.co.nz for more info

Instrument	Tutor	Contact Details	Fees per lesson per student	Year
Piano Individual lessons	Tim Julian	Email: studio@fragilecolours.com Ph 027 667 3737 or 5444847	\$23 per half-hour lesson (Individual)	Yrs 3-6
Guitar Bass Ukulele Group Lessons (3 per group)	Kurt Somervell	Email: somervellkurt@gmail.com Ph 021 811 477	\$10 per half-hour lesson (3 per group)	Guitar/Bass Yrs 4-6 Ukulele Yrs 2 - 6
Guitar Bass Ukulele Individual lessons	Kurt Somervell	Email: somervellkurt@gmail.com Ph 021 811 477	\$15 per 20 minute lesson (Individual)	Guitar/Bass Yrs 4-6 Ukulele Yrs 2 - 6
Violin Individual lessons	Shelby Maples	Email: music4ever@xtra.co.nz Ph 027 812 0720	\$30 per lesson. (Individual)	Yrs 1-6

You might be surprised by
the **true value** of your home.

If you want to compare your home's new RV
with its current market value, contact me today
for a FREE, no-obligation property appraisal.

TREMAINS



SeeKING real estate?
SeeKING

Tracey King | M 027 334 8301
tracey.king@trema.co.nz



**Welcome Bay
Takeaways**



WELCOME BAY VILLAGE

PH: 544 1629



HOURS: MON & TUES: 4-9PM | WED - SUN: 11:30-9PM



GYM club Performance Gymnastics



NOTE: Change - 2019 Term 1 ONLY
Selwyn Ridge Hall - Wednesday's at 12:15pm (Lunch)
Starting 20 February to 10 April

Skill development - strength building - Parkor training - flexibility
and mental concentration - Fantastic coaches.

Flyers available at school office, register at www.gymclub.co.nz
website or call 0800 273368.



WHO

Selwyn Ridge Primary students
in years 4 to 6.

WHAT

Fun and interactive high level
coding course learning how to
create program technology.

WHEN & WHERE

Term 1, 2019
Classroom 22
Thursdays 2.40 PM to 3.40 PM

THE WAY TO SUCCESS

Our classes will help develop your child's brain by teaching them
advanced coding skills like how to make a computer/mobile/tablet
website or application. We also include robots! Children have an
amazing capacity for learning and introducing them to technology
coding while they're young will help set them up for success in our
increasingly digital world. Your kid will learn to not only passively
consume technology, but to create technology so that they can be
an active part of the digital era.

APPLY NOW (Limited Spaces Available)

To give your child the opportunity to learn how to program
technology apply now at codingnz.com/signup



**KEAM
CONSTRUCTION**



**New Homes
Renovations
Extensions**

Ph 022 035 8804

www.keamconstruction.co.nz



Pippins is loads of fun in Welcome Bay!

There is more room for girls to join.

It is a place where **girls can be girls** in a safe,
positive, non-competitive environment.

- Girls can develop their sense of confidence and adventure.
 - be empowered to make a difference in their world.
 - Take on new challenges
 - Make new friends
- All this one night a week each term.

To find out more please go to <https://girlguidingnz.org.nz/join-us/>



Waugh's Pharmacy

Neil Waugh B.Pharm M.P.S.

Ph/Fax 544 2418

252 Welcome Bay Road Tauranga

We are open: 8:30 - 5:30pm Monday - Friday
9:00 - 12:00pm Saturday



NAM WAH PAI KUNG FU
Tauranga Branch

Selwyn Ridge Hall
Monday's 6pm to 7:30pm

Cost: Adult \$25 - Children \$20 per month

All ages welcome, to learn a combination of Arts.

For more info call Brian or Shelley Barnett on 07-544-6592 or
text Brian (021-241-7059) or Shelley (027-636-4029)

Email briannshelley@clear.net.nz or Visit our Facebook

<https://www.facebook.com/namwahpaibop/>